

RICOH Pro C7100/ C7100X Series

Color Production Printing System

✓ Copier ✓ Printer ✓ Scanner

Finishing Options & Paper Handling Configurations

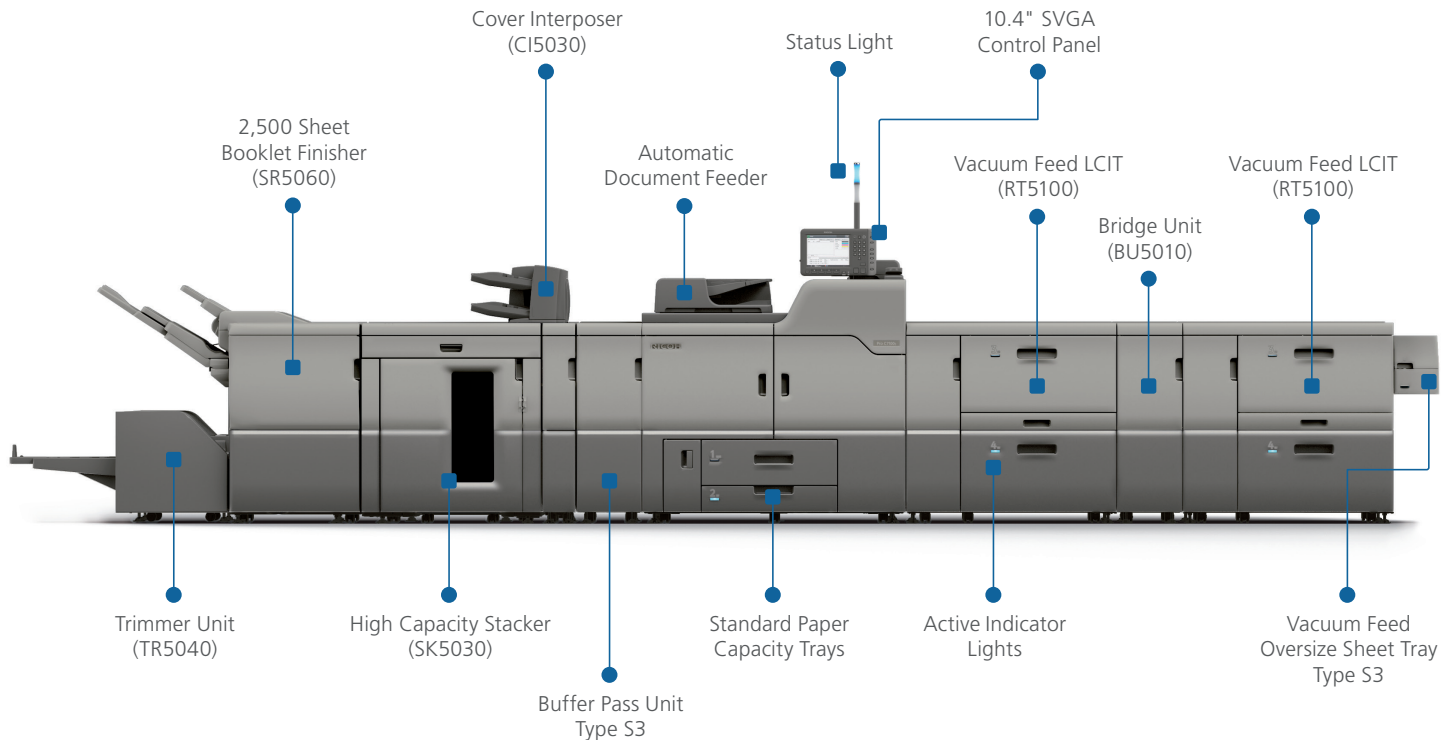


Meet your precise needs for end-to-end document production with a range of professional inline finishing and paper handling options.



Finishing Options

Configuration shown below: Pro C7100 with two Vacuum Feed LCIT Units (RT5100) and Vacuum Feed Oversize Sheet Tray Type S3, Bridge Unit (BU5010), Buffer Pass Unit Type S3, Cover Interposer (CI5030), High Capacity Stacker (SK5030), Booklet Finisher (SR5060) with Trimmer (TR5040)



RICOH Pro C7100/C7100X Series Optional Finishers

- Cover Interposer (CI5030)
- 2,500-Sheet Booklet Finisher (SR5060)
- 3,000-Sheet Staple Finisher (SR5050)
- Trimmer Unit (TR5040)
- Buffer Pass Unit Type S3
- Ring Binder (RB5020)
- Plockmatic Booklet System (PBM 350/500)
- High-Capacity Stacker (SK5030)
- Perfect Binder (GB5010)
- Multi-Folding Unit (FD5020)
- GBC StreamPunch™ Ultra
- Decurl Unit (DU5040)

RICOH Pro C7100/C7100X Series

Decurl Unit



DU5040

The Paper Decurl Unit is ideal for commercial printers who frequently produce jobs with high toner coverage on thin paper and paper with long grain, as it significantly reduces the natural curl that can occur, delivering sheets with optimal flatness.

Buffer Pass Unit Type S3



Buffer Pass Unit

Minimizes toner blocking on stacked, coated paper by cooling output prior to the media entering a finishing unit. Recommended for print shops that frequently produce long runs with heavy coverage on uncoated media.

Cover Interposer



CI5030

The Cover Interposer Tray allows pre-printed covers and inserts to be easily fed into the finishing workflow from two sources for front and back covers. This option eliminates time-consuming offline manual insertion and reduces the wear and tear on originals.

RICOH Pro C7100/C7100X Series

Multi-Folding Unit



FD5020

The versatile Multi-Folding Unit offers six professional folding patterns to accommodate virtually any folding need inline. Newsletters, brochures, sales and marketing materials can be professionally finished in a variety of folding patterns including Half-fold, Letter Fold-in (Tri-fold), Letter Fold-out (Tri-fold), Gate-Fold, Double Parallel (Four-Fold) and Z-Fold.

GBC StreamPunch Ultra



GBC StreamPunch Ultra

The GBC StreamPunch Ultra is truly an impressive, next generation inline punch system. It dramatically lowers labor costs and streamlines workflow from printing to binding with the capability to “Double Punch” for two-up sheet processing, and support for variable sheet sizes and tab processing. The informative GUI display allows users to easily initiate actions and will prompt if adjustments are needed.

Ring Binder



RB5020

Collate, hole punch, insert and close rings inline automatically for up to 100-sheet documents with no manual intervention to reduce steps and labor costs.

RICOH Pro C7100/C7100X Series

Perfect Binder



GB5010

Glue-bind up to 200 sheets/booklet, including covers up to 300 g/m². The trimming function creates 3 clean edges for the output of professional perfect bound booklets.

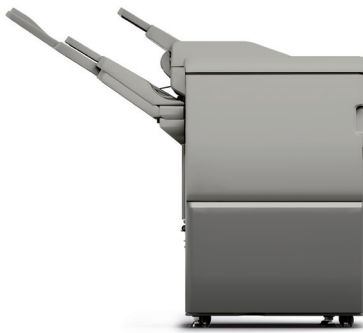
High Capacity Stacker



SK5030

This Stacker Unit accommodates a wide variety of media sizes, up to 13" × 19" and holds up to 5,000 sheets. The roll-away cart makes transporting heavy output quick and easy.

3,000-Sheet Finisher with Multi-Position Stapling



SR5050

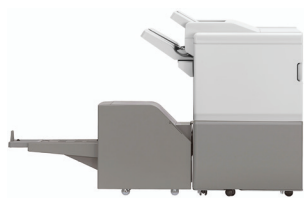
The SR5050 offers multi-position staple finishing of up to 100 sheets at sizes up to 13" × 19.2". The unit also offers a shift tray that holds 3,000 sheets and a 250-sheet proof tray. Two and three hole punch options are available. Staple positions include top, bottom, 2 staples, and top-slant.

RICOH Pro C7100/C7100X Series

2,500-Sheet Booklet Finisher



SR5060



SR5060 with optional TR5040

The SR5060 creates saddle-stitched booklets up to 20 sheets – the equivalent of an 80-page book and can be paired with the optional Trimmer Unit (TR5040) to cut the “creep.” The SR5060 includes a conveyor belt which pushes the finished product off the output tray and into a box or storage container, allowing for the unlimited production of booklets with virtually no supervision which increases productivity. This finisher is ideal for the production of booklets, printed guides, directories, user manuals, exam books and more.

Plockmatic PBM 350/500 Booklet System



PBM 350



PBM 500

The Plockmatic PBM350/500 is a cost-effective modular inline booklet making solution ideal for In-Plants and Commercial Print Providers. It enables fully automated job production and expands the range of professionally finished documents that can be completed in-house.

Note: The PBM350 is easily upgradeable to a PBM500 any time on site.

System options include:

- Book Fold Module
- Cover Feeder
- RCT - Rotate Crease Trim
- Face Trimmer

Plockmatic 35-sheet Booklet Maker (PBM350):

Staple and fold up to 35 sheets creating 140-page booklets.

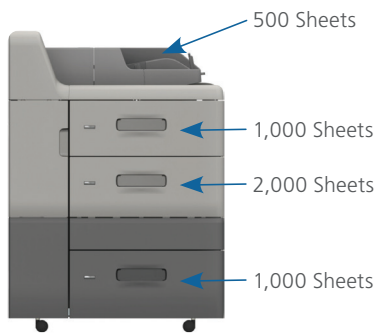
Plockmatic 50-sheet Booklet Maker (PBM500):

Staple and fold up to 50 sheets creating 200-page booklets.

Paper Handling Options for Printing Oversized Media

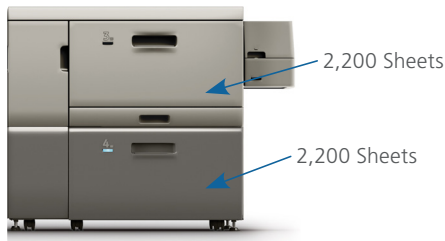
The Pro C7100/C7100X Series provides the ability to print oversized media to produce high-value applications. Refer to the information below to select the configuration that best meets your workflow needs. Note: One oversized print option per configuration.

OPTION 1 – Friction Feed RT5090 + Multi Bypass Tray BY5010 + Oversize Sheet Tray Type S3



- Enables the system to run uncoated media in sizes up to 13" x 49" and weights up to 220 gsm
- With this configuration, you can also run coated media in sizes up to 13" x 19.2" and weights up to 300 gsm, but you cannot run clear or colored media
- Note: the oversized media must run through the Multi Bypass Tray

OPTION 2 – Vacuum Feed LCIT RT5100 + Vacuum Feed Oversize Sheet Tray Type S3



- Enables the system to run coated and uncoated media in sizes up to 13" x 27.5" and weights up to 300 gsm
- With this configuration, you can also run clear and colored media in sizes up to 13" x 19.2" and weights up to 360 gsm
- Note: Clear and colored media runs through the paper trays of the Vacuum Feed LCIT RT5100 and the oversized media must run through the Vacuum Feed Oversize Sheet Tray Type S3
- Colored or clear media cannot be finished inline (i.e., staple, hole punch, fold)

Note: Users can configure up to 3 Vacuum Feed LCITs to the system. Bridge Unit BU5010 must be added between each LCIT.

RICOH Pro C7100/C7100X Series

OPTION 3 – Vacuum Feed RT5100 + Multi Bypass Tray 5010 + Multi Bypass Attachment Kit + Oversize Sheet Tray Type 3



500 Sheets



2,000 Sheets

2,000 Sheets

- Enables the system to run uncoated media in sizes up to 13" x 49" and weights up to 220 gsm
- With this configuration, you can also run clear and colored media in sizes up to 13" x 19.2" and weights up to 360 gsm through the paper trays of the Vacuum Feed LCIT RT5100
- Note: Clear and colored media runs through the paper trays of the Vacuum Feed LCIT RT5100 and the oversized media must run through the Multi Bypass Tray
- Colored or clear media cannot be finished inline (i.e., staple, hole punch, fold)

Note: Users can configure up to 3 Vacuum Feed LCITs to the system. Bridge Unit BU5010 must be added between each LCIT.

