

Multifunction Color

# RICOH MP C501SP

✔ Printer   ✔ Copier   ✔ Facsimile   ✔ Scanner

**RICOH**  
imagine. change.



MP C501SP

50 ppm  
Black & white  
/Full color

# Make work flow easier — and save more than time

Looking to fit everything into your workday, without stretching yourself or your budget too thin? Choose the RICOH MP C501SP for a powerful digital multifunction device designed specifically to accommodate the unique needs of today's smaller workgroups. This affordable and versatile device combines color A4 output, advanced scanning and optional faxing with robust security, responsive support and impressive finishing to keep information and work flowing effortlessly. Leverage a host of intuitive, customizable features and cloud apps usually reserved for larger, more expensive systems to complete every task, every time. Tap into personalized one-touch workflow shortcuts. Authenticate users to protect what's yours. Print remotely from mobile devices. And, collaborate with coworkers, clients and others seamlessly whether you're around the corner or across the globe.

- Print up to 50 prints per minute in full-color
- Pair with personal mobile devices to print and share information instantly
- Customize the easy-to-use smart operation panel to expedite everyday workflows
- Resolve issues quickly with one-touch access to remote support and cloud apps
- Thwart unauthorized users and network security threats
- Staple and hole-punch document sets with optional finishing





## Complete the everyday, every which way

Accomplish more with simple, convenient workflows

### Value everyday productivity

Make an immediate impact by moving information quickly. Print high-quality color output with resolution up to 1200 dpi at speeds up to 50 pages per minute (ppm). Or, share them electronically with advanced scan-to and optional fax capabilities. Store up to 3,000 documents on the Document Server for faster access to regularly used forms. Use the ID Card Copy feature to copy and scan two-sided documents, such as identity cards, on one side of a sheet of paper. Add Ricoh and third-party software solutions, including RICOH GlobalScan NX™ or RICOH Streamline NX™, to automate repetitive everyday tasks. Reduce workflow interruptions by adding optional paper trays to expand paper capacity up to 2,300 sheets.



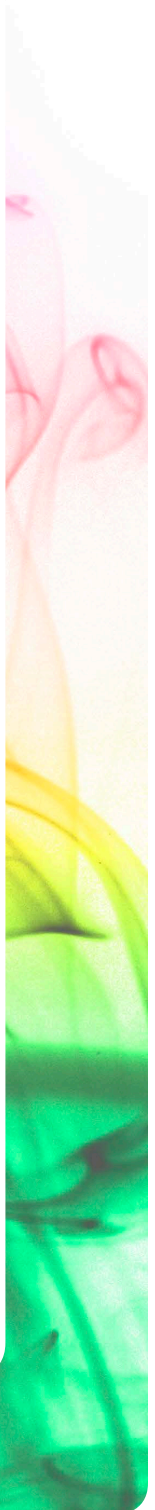
### Take your work personally

Move information with the flick of a finger. Built with Workstyle Innovation Technology, the MP C501SP puts customization in your hands with a 10.1" Wide Super VGA Smart Operation Panel. Swipe, pinch, tap or drag-and-drop to find information, change settings, preview prints and more — and move between tasks quickly and conveniently. Place iconic widgets on the Home Screen for quick updates on date, time, supplies and other important information.



### Load up on convenience

Use Ricoh's optional Cloud Workflow Solutions to make better use of your time and IT resources. With this suite of cloud-based workflow applications and services — built on the optional RICOH Integrated Cloud Environment (ICE) — you can download a wide range of smart apps and place them on the Home Screen as iconic shortcuts to perform advanced capture, processing and routing workflows with ease. Or, you can grab data, photos and more from cloud applications, such as Google Drive™ or Dropbox™, and print immediately. Search for other one-step workflow apps directly from the RICOH Application Site to expedite specific tasks, such as scanning directly to shared folders, using cloud fax services, recalling settings from previous jobs and many more.







# Manage everyday tasks, more ways, more places

## Work from anywhere

What good is information if you can't access it? Download the RICOH Smart Device Connector app on your smartphone or tablet to break free from the office. Simply tap your Android™ device to the optional Near Field Communication (NFC) tag on the MP C501SP or scan the QR code on its operation panel with your iOS device to connect and share information instantly. You can even use the app to connect to Ricoh digital projectors and whiteboards. Print documents, images and more directly from your smartphone or tablet via Mopria™. Or, transfer information directly from the MP C501SP to your device and take it with you.



## Finish what you started

Put the finishing touches on your best ideas with the MP C501SP via unique features commonly found only on larger, more expensive MFPs. Produce high-quality output with precise text and compelling colors on every page with our unique PxP®-EQR toner. Use the 500-sheet internal finisher to give your presentations, proposals and brochures a more professional look quickly with automated stapling and stacking. Print on a wide range of media and thicker stocks, including up to 8.5" x 14" sizes, to ensure your messages get noticed by the target audience. For your largest images and presentations, use Poster Copy to print on multiple pages and create easy-to-see posters.



## Share information electronically

Send a message quickly. Use the 220-Sheet Single Pass Document Feeder (SPDF) to copy, scan and fax two-sided, full-color and black-and-white documents at high speeds in a single pass. Distribute files in moments via a wide range of Scan-to options, including Scan-to-Email, FTP, PDF, URL and more. Use optional OCR scanning to create searchable PDF files and access them quickly with a keyword search. Add the optional fax module for either Internet Faxing or LAN faxing to send digital files electronically and avoid transmission delays, tedious trips to the MFP and paper waste.



# Take control of workgroup efficiency

## Find smarter support immediately

Every missed deadline is a missed opportunity. The MP C501SP includes multiple innovative administrative tools to minimize downtime. With RemoteConnect Support, Ricoh technicians can access your device remotely to diagnose and resolve even the most challenging issues in real time. Network administrators can use the Remote Panel Operation tool to monitor and change settings in moments, even if you're in a satellite office. Use the Automatic Remote Firmware Update tool to ensure you're constantly up to date. Plus, you can download an app from the RICOH Application Site and place it on the Home Screen for one-touch access to a library of convenient, easy-to-follow how-to videos.



## Be accountable for advanced security

Take responsibility for your work. With User Authentication, every user enters a username and passcode at the control panel or swipes an identity card at the optional NFC card reader to access the device. As a result, you can track all activity and monitor every user. Use Locked Print to hold print jobs in queue until authorized users release them to prevent sensitive information from being seen by passersby. Close unused network ports to limit access to your network. Overwrite latent images and stored data on the hard disk drive with standard DataOverwriteSecurity System (DOSS). Help protect information in transit with a wide range of encryption alternatives.



## Less energy, less paper and more efficiency

Give the environment — and your budget — a break. The MP C501SP offers a host of eco-friendly features — including paper-saving default duplex printing, Sleep Mode and a Motion Sensor — to reduce operating costs. The MFP is ENERGY STAR® certified and qualifies for EPEAT® Gold criteria.\* It offers a low typical electricity consumption (TEC) value of 2.24 kWh/week to keep monthly energy bills in check. Reduce power consumption even more by programming the MFP to shut down automatically during off-business hours. Plus, you can track how much paper you're saving and encourage responsible printing via friendly reminders on the Home Screen when you use the built-in Eco-Friendly Indicator.



\*EPEAT Gold rating is applicable only in the USA.

# Perform more jobs with fewer hassles



- 1 Smart Operation Panel:** Customize and automate workflows on the 10.1"-wide Super VGA Smart Operation Panel. Create shortcut icons, add convenient widgets and access information with one-touch control using the same motions you use on your smartphone or tablet. Use the built-in Web Help feature to find information about the most common functions on your MFP or the Web Browser to search for web pages directly from the panel.
- 2 Motion Sensor:** Senses approaching users and awakens the Smart Operation Panel from Sleep Mode so it is ready to begin key input within one second of the user touching the screen.
- 3 220-Sheet Single Pass Document Feeder (SPDF):** Copy, scan and fax full-color and black-and-white documents at high speeds (110 ipm single-sided/180 ipm double-sided) in a single pass.
- 4 Paper Trays (Standard):** With two 550-sheet paper trays, you can produce more jobs with fewer reloads.
- 5 100-Sheet Bypass Tray (Standard):** Feed larger paper sizes — including banner sizes up to 8.5" x 49.6" with a Banner Paper Guide Tray — to create and share a wider range of deliverables with your audiences.
- 6 Tandem Large Capacity Tray (Optional):** Add more capacity for extended runs of 8.5" x 11" sizes with two 550-sheet Paper Trays.
- 7 125-Sheet One-Bin Tray (Optional):** Separate output so users can retrieve documents quickly.
- 8 Internal Finisher (Optional):** Enables up to 500 sheets of output in a wide range of finishing options, including triple stapling, shift sorting and stapling different sized sheets. Add an optional PU3040 double hole punching unit.
- 9 Toner Cartridges:** Conveniently located behind the front panel and easily replaced.

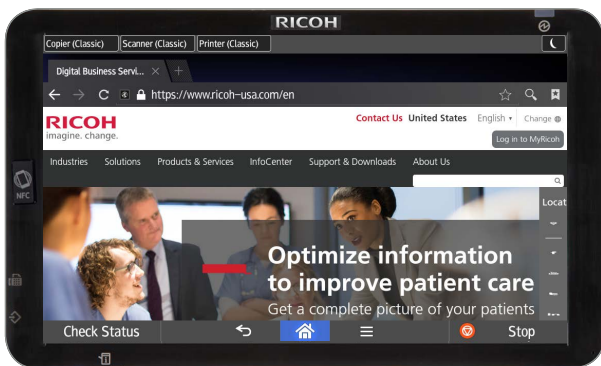
10



11



12



13



- 10 **User Authentication:** Use embedded Quick Card authentication technology and an optional NFC or HID card reader to track activity for every user who logs in by proximity card.
- 11 **Standard Scan-to-Media/Print from Media:** Make high-quality prints from PDF, TIF, JPEG or XPS files — or scan documents to a USB Clip drive or SD card.
- 12 **Web Browser:** Take advantage of the built-in web browser to search for web pages directly from the Smart Operation Panel.
- 13 **Easy Maintenance:** Maximize productivity with supplies that are easy for any user to replace.

- **Document Server:** Access up to 3,000 frequently used files on the MFP's hard drive in moments. Create up to 200 shared or passcode-protected personal folders to store the digital files.
- **Automatic Duplexing (Standard):** Save paper and filing space with standard automatic duplexing that runs virtually at the same speed as one-sided output.
- **Broad Compatibility:** Quickly integrate this system with built-in compatibility for PC, Macintosh, Linux and host printing environments.



# RICOH MP C501SP

## SYSTEM SPECIFICATIONS



### General Specifications

Configuration	Desktop
Printing Process	4-Drum Method
Output Speed (Copy/Print)	50-ppm B&W & FC (LTR)
Warm-Up Time	24 seconds
Recovery from Sleep Mode	Unit: 8.8 seconds; Smart Operation Panel: 1.0 second (motion sensor activated)
First Copy Time (FC/B&W)	5.7/4.0 seconds
Paper Capacity	Standard: 2 x 550 sheets + 100-Sheet Bypass Tray, Maximum: 2,300 sheets 1st Paper Tray: 8.5" x 11" (A4) 2nd Paper Tray: 5.5" x 8.5" - 8.5" x 14" (A6 - LG) Bypass: 5.5" x 8.5" - 8.5" x 14" (A6 - LG); Custom Sizes: Width: 3.5" - 8.5" (90 - 216 mm), Length: 5.8" - 49.6" (148 - 1260 mm)
Supported Paper Weights	Standard Trays: 16 - 80 lb. Bond/166 lb. Index (60 - 300 g/m) Bypass Tray: 14 - 80 lb. Bond/ 166 lb. Index (52 - 300 g/m) Duplex Unit: 14 - 68 lb. Bond (52 - 256 g/m <sup>2</sup> )
Paper Types	Plain, Recycled, Special Paper 1-3, Letterhead, Cardstock, Preprinted, Bond, High-Gloss Coated, Coated, Color, Labels*, OHP* & Envelopes**
Auto Duplex	Standard
Output Capacity	Standard: 500 sheets Maximum: 625 sheets (with options)
Dimensions (WxDxH)	23.1" x 27.0" x 31" (587 x 685 x 788 mm)
Weight	197 lbs. (89.5 kg) (includes SPDF)
Power Requirements	120V - 127V, 60Hz, 12A
Power Consumption	1,584W or less; Sleep Mode: 0.78W
TEC Value***	2.24 kWh/week
ENERGY STAR	Certified
EPEAT	Gold
Noise Level (Full System/Standby)	70.5/30.9 dB Nominal
*Bypass Tray only **Paper Tray 2 Only ***Typical Electricity Consumption by ENERGY STAR Qualified Imaging Equipment Test Procedure	

### Copier Specifications (Standard)

Copy Resolution	600 dpi
Document Feeder Type	Single Pass Document Feeder (SPDF)
Document Feeder Capacity	220 sheets
Document Feeder Original Size	5.5" x 8.5" to 11" x 17" (140 x 216 mm to 279 x 432 mm)
Document Feeder Paper Weight	Simplex: 11 - 34 lb. Bond (40 - 128 g/m <sup>2</sup> ); Duplex: 14 - 34 lb. Bond (52 - 128 g/m <sup>2</sup> )
Maximum Original Size	Platen: Up to 8.5" x 11.7"/A4 (216 x 297 mm) SPDF: Up to 11" x 17"/A3 (279 x 431 mm)
Maximum Copy Quantity	999 copies
Preset Reduction & Enlargement Ratios	25%, 50%, 65%, 73%, 78%, 85%, 93%, 100%, 121%, 129%, 155%, 200%, 400%
Zoom Range	25% to 400% in 1% increments

### Copier Features

Auto Color Calibration, Auto Color Selection, Auto Duplex, Auto Off Timer, Auto Paper Selection, Auto Start, Auto Tray Switch, Bates Stamp, Centralized Address Book Management, Color Balance Adjustment/Program, Color/Image Creation, Combine Copy (2/4/8 into 1), Cover/Chapter/Slip Sheets, Electronic Sort, Energy Saver Timer, ID Card Copy, Image Density (Auto/Manual), Image Rotation, Image Quality Mode (Text, Photo, Text Photo), Import/Export of Preference Settings, Information Screen (Eco-Friendly Indicator), Interrupt Copy, Home UI Customization, Job Preset (up to 8), Job Programs (up to 25), Login/Logout Button, Remote Operation Panel, Rotate Sort, Sample Copy, Series Copy, Shift/Erase/Margin Adjustment, Simple UI Apps, Simplified Display, Single Function Apps, Smart Apps, Tilt Operation Panel, User Codes (up to 1,000), Web Browser

### Printer Specifications (Standard)

CPU	Intel Atom Processor Bay Trail 1.75 GHz
Memory /HDD	2 GB RAM/320GB HDD Standard & 4GB RAM Option
Page Description Languages	Standard: PCL5c, PCL6, PDF Direct emulation, PostScript3 emulation Optional: Adobe PostScript3, Adobe PDF Direct Print, XPS
Font Support	Standard: PCL: 45 Roman fonts + 13 International fonts; PostScript3: 80 Roman fonts + 13 International fonts Optional: Genuine Adobe PostScript3 Emulation: 136 Roman fonts
Max. Print Resolution	1200 x 1200 dpi
Network Interfaces	Mainframe: 1000Base-T/100Base-TX/10Base-T Ethernet, USB Type A (Optional 2 Ports) Operation Panel: Wireless LAN IEEE 802.11 b/g/n (2.4 GHz only), Bluetooth 4.0, SD Card Slot, USB Host Type A, USB Host Type Mini B, NFC Tag Option: Wireless LAN IEEE802.11a/b/g/n, USB 2.0 Type B
Network Protocol Support	TCP/IP (IPv4, IPv6)
Network/OS	Windows 7/8.1/10/Server 2008/Server 2008R2/Server 2012/Server 2012R2/Server 2016; Unix: Sun Solaris 10, HP-UX 11.x/11i v2/11i/v3, SCO OpenServer 5.0.7/6.0, RedHat Linux Enterprise V4/V5/V6, IBM AIX V6.1/V7.1/V7.2; Citrix XenDesktop 7.0/7.1, Citrix XenApp 7.5/7.6/7.7/8/9/11/12/13/14/15/16/17; Mac OS X v.10.10 or later, SAP R/3, SAP S/4, IBM iSeries AS/400-using OS/400 Host Print Transform Device Manager NX Series, Web Image Monitor, @Remote
Utilities	

### Other Printer Features

Sample/Locked/Hold/Scheduled/Stored/Store and Print/Black Over Print, CLP Simulation, PDF Direct Print, PictBridge\*, Mail to Print, Classification Code, Bonjour Support, Windows Active Directory Support, DDNS Support, PCL Resident Font Adoption, Tray-Parameter Change from Web Image Monitor, 1200 dpi Support, Universal Driver, XPS Support, WS Printer, Wireless LAN Interface Option, Media Direct Print (Print from USB/SD), Banner Page Print, Auto Job Promotion, Poster Print, WiFi Protected Setup

### Scanner Specifications (Standard)

Scanner Resolution	B&W and FC scanning at 100 - 600 dpi, Up to 1200 dpi for TWAIN scanning
Scanning Speed (B&W & Color LTR)	Simplex: 110 ipm; Duplex: 180 ipm (200 dpi/300 dpi)
Scan Area	11.7" x 14" (297 - 355 mm)
Compression Method	B&W TIFF: MH, MR, MMR, JBIG2, Grayscale Color: JPEG
Supported File Formats	Single/Multi-Page TIFF, Single/Multi-Page PDF, Single/Multi-Page High Compression PDF, Single/Multi-Page PDF/A, Single Page JPEG
Scan Modes	Scan-to-Email (with LDAP support) Scan-to-Folder (SMB/FTP) Scan-to-URL Scan-to-Media (USB/SD Card) Network TWAIN Scanning

### Document Server Specifications (Standard)

Max. Stored Documents	3,000
Max. Pages/Document	2,000
Max. Page Capacity	9,000
Max. Number of Folders	200

### Security Features (Standard)

Authentication for Windows/LDAP/Basic/User Code/802.1x  
Wired, Encryption for Address Book/Authentication Password/SSL Communication/S/MIME/IPSEC Communication/HDD/Transport Layer Security/SSH/Wireless LAN, Network Protocol On/Off, IP Filtering, Mask Type for Copying/Data Security, Unauthorized Copy/Print Prevention, Quota Setting/Account Limit, SMTP over SSL, Compulsory Security Stamp

### Facsimile Specifications (Option Type M39)

Type	ITU-T CCITT G3
Circuit	PTSN, PBX
Resolution	200 x 100 dpi, 200 x 200 dpi, 400 x 400 dpi (with optional SAF memory)
Modem Speed	33.6K - 2,400 bps w/Auto Fallback
Compression Method	MH, MR, MMR, JBIG
Transmission Speed	G3: Approximately 2 seconds/page (JBIG)
Scanning Speed	Up to 58 spm - Standard and Detail Mode (LTR)
Auto Dialing	2,000 Quick/Speed Dial numbers; 100 Group Dial numbers
Memory Capacity (SAF)	Standard: 4 MB (approx. 320 pages), Optional: 64 MB (approx. 4,800 pages) with optional SAF memory

### Hardware Accessories

#### Two-Tray Paper Bank (PB1140)

Tray Capacity	1,100 sheets (550 sheets x 2 trays)
Paper Size	3.5" x 5.8" to 8.5" x 14" (A6 - LG)
Paper Weight	14 - 80 lb. Bond/166 lb. Index (60 - 300 g/m <sup>2</sup> )
Dimension (WxDxH)	29.9" x 33.1" x 14.9" (760 x 840 x 378 mm)

#### One-Bin Tray (BN3130)

Paper Size	5.5" x 8.5" to 8.5" x 14" (A5 - LG)
Paper Weight	14 - 80 lb. Bond/166 lb. Index (60 - 300 g/m <sup>2</sup> )
Tray Capacity	125 Sheets
BN3130 can also be installed with the Internal Finisher SR3130.	

#### 500-Sheet Internal Finisher (SR3130)

Paper Size	3.5" x 5.8" to 8.5" x 14" (A6 - LG)
Paper Weight	14 - 80 lb. Bond/166 lb. Index (52 - 300 g/m <sup>2</sup> )
Stack Capacity	500 sheets (8.5" x 11" or smaller) (A4/LT) 250 sheets (8.5" x 14" or larger) (LG)
Staple Paper Size	7.25" x 10.5" to 8.5" x 14" (A4 - LG)
Staple Paper Weight	14 - 28 lb. Bond (52 - 105 g/m <sup>2</sup> )
Staple Capacity	50 sheets (8.5" x 11") (A4) 30 sheets (8.5" x 14" and/or Mixed Sizes) (B5 - LG)

Staple Positions	Top, Bottom, 2 Staples
Dimensions (WxDxH)	21.5" x 20.6" x 6.7" (546 x 523 x 170 mm)

#### 2-/3-Hole Punch Unit (PU3040NA)

(Optional; Installs inside SR3130 Internal Finisher)	
Punch Paper Sizes	7.25" x 10.5" to 8.5" x 14" (A4 - LG)
Punch Paper Weight	14 - 45 lb. Bond (52 - 169 g/m <sup>2</sup> )
The Internal Finisher SR3130 must be included to add this option.	

### Additional Accessories

Caster Table Type M3, Cabinet Type F, Extended USB Board Type M19, Fax Option Type M39, IEEE 802.11a/g/n Interface Unit Type M19, OCR Unit Type M13, PostScript3 Unit Type M33, Power Filter ESP XG-PCS-15D, Embedded HotSpot Type S, Memory Unit Type M19 (4 GB), Smart Card Reader Built-in Unit Type M19, NFC Card Reader Type M19, 1 Bin Tray BN3130

### Consumables

PxP-EQR Toner	Yield (Prints/Bottle)
Black	14,000
Cyan	12,000
Magenta	12,000
Yellow	12,000

Some options may not be available at the time of market release.

Specifications are subject to change without notice.

For maximum performance and yield, we recommend using genuine Ricoh parts and supplies.

**RICOH**  
imagine. change.

www.ricoh-usa.com

Ricoh USA, Inc., 70 Valley Stream Parkway, Mahwah, PA 19255, 1-800-63-RICOH  
©2018, Ricoh USA, Inc. All rights reserved. Ricoh® and the Ricoh logo are registered trademarks of Ricoh Company, Ltd. All other trademarks are the property of their respective owners. The content of this document, and the appearance, features and specifications of Ricoh products and services are subject to change from time to time without notice. Products are shown with optional features. While care has been taken to ensure the accuracy of this information, Ricoh makes no representation or warranties about the accuracy, completeness or adequacy of the information contained herein, and shall not be liable for any errors or omissions in these materials. Actual results will vary depending upon use of the products and services, and the conditions and factors affecting performance. The only warranties for Ricoh products and services are as set forth in the express warranty statements accompanying them.

R3951